

**WiseDoc®  
& WiseUv®**

## Gel Documentation System

**Wisd.**   
LABORATORY INSTRUMENTS

- **UV Transilluminators**
- **Portable Gel Documentation System**
- **Unified Gel Documentation System**

For Gel Documentation and Analysis, you can find **WiseDoc®** Range is the Best Choice Based on it's Cost-effective, Flexible Configuration and High Specification.

The Compact 1,5M Pixel Camera, Safe Darkroom and Built-in Transilluminator Implement an Innovation in DNA Imaging Labs.

You can use the System with PC Through USB Interface.

### ► UV Transilluminator



**WUV-L50**

### ► Portable Gel Documentation System



**WGD-20**



**WGD-30**

### ► Unified Gel Documentation System

## “witeg” **WiseUv® WUV** UV Transilluminators, Standard- and Compact-Case Models

Economical, Robust, Versatile, Hinged UV-Blocking Safety Cover, 20×20 cm Filter, 48 W / 90 W, 312 nm / 365 nm / 312+365 nm

- Low Cost, Robust, Versatile, Affordable & Gentle Excitation
- Hinged UV-Blocking Safety Cover Protects User from UV Radiation
- Stainless-Steel Frame and Robust Steel Housing
- Increased UV Intensity and Homogeneity
- CE Certified

### Application & Features

- \* Low Cost, Robust, Versatile, Affordable & Gentle Excitation.
- \* Hinged UV-Blocking Safety Cover Protects User from UV Radiation.
- \* Long-Life Electronic. (Low Heat, no Flickering)
- \* Stainless-Steel Frame and Robust Steel Housing.
- \* Increased UV Intensity and Homogeneity.
- \* Used for Standard Gel Documentation and Preparative Work.
- \* Ideal for Detecting Very Small Amount of DNA & RNA Stained by EtBr.
- \* High (100 %) / Low (75 %) Intensity Switch.
- \* CE Certified.

### Specification

Model	WUV-L10	WUV-L20	WUV-L50	WUV-M10	WUV-M20
Filter Size (mm)	200 × 200				
Wave Length (nm)	Single 365	Single 312	Dual 365+312	Single 365	Single 312
UV Lamps	15 W × 6 ea (90 W)			8 W × 6 ea (48 W)	
Dimension (w × d × h) (mm)	495 × 330 × 95			350 × 275 × 95	
Weight	10 kg			8 kg	
Others	CE Certified				
Packing Dimension (w × d × h) (mm)	520 × 380 × 220			380 × 320 × 220	
Gross Weight	12 kg			10 kg	
Power Consumption	90 W			48 W	
Power plug type	Hybrid E+F				
Power	AC 230 V, 50 / 60 Hz				

\* Other Specifications are available upon Customer's Request.

### Ordering Information

#### Standard Case Model

- DH.WUV00010 Transilluminator, **WUV-L10**, 20 × 20 cm Filter, 365 nm, 15 W × 6 ea  
 DH.WUV00020 , **WUV-L20**, 20 × 20 cm Filter, 312 nm, 15 W × 6 ea  
 DH.WUV00050 , **WUV-L50**, 20 × 20 cm Filter, 365 nm + 312 nm, 15 W × 6 ea

#### Mini Case Model

- DH.WUV00110 Transilluminator, **WUV-M10**, 20 × 20 cm Filter, 365 nm, 8 W × 6 ea  
 DH.WUV00120 , **WUV-M20**, 20 × 20 cm Filter, 312 nm, 8 W × 6 ea

#### Spare Accessories

- DH.WUV01010 UV Lamp, **UVL365**, for **WUV-L10/-L50**, 365 nm, 15 W  
 DH.WUV01020 , **UVL312**, for **WUV-L20/-L50**, 312 nm, 15 W  
 DH.WUV01110 , **UVM365** for **WUV-M10**, 365 nm, 8 W  
 DH.WUV02110 , **UVM312** for **WUV-M20**, 312 nm, 8 W



Transilluminator, Standard Type (WUV-L50)



Transilluminator, Mini Type (WUV-M20)

**“witeg” WiseDoc® WGD-20 Portable Gel Documentation System, 1.5M Pixel Compact & Cost-Effective System, Real-Time Image through USB Interface, WiseCapture II™ Capture Software, Portable Darkroom Hood with Digital CCD Camera & Optical Lens, TotalLab™ DNA Analysis Software**



Portable Gel Documentation System (WGD-20)

- The Most Cost-Effective System in the Market
- High Precise and Large Caliber Optical Lens with Zoom, Focus and Iris Control are Used
- CE Certified

**Application & Features**

- \* The Most Cost-Effective System in the Market.
- \* Digital CCD Camera (Resolution 1.5 Million pixel) with Portable Darkroom is Offered.
- \* 1.360×1.024, 10-bit CCD, Available for 8-bit Gray Level Image Capturing.
- \* External Dimension : 260×260×430 mm
- \* Weight : 9 kg
- \* Power Consumption : N/A
- \* Very Compact Portable Darkroom System Enables the Existing Transilluminators in the Lab to be used together with. High Flexibility in use is Offered.
- \* High-Precision and Large Caliber Optical Lens with Zoom, Focus and Iris Control is used.
- \* USB 2,0 Interface is Available, through which Real-Time Images are Transferred Directly to PC.
- \* WiseCapture II™ Software : Easy and Fast Capture of Gel Image.
- \* TotalLab™ Software : Fully Automatic, Single Button Press Complete Image Analysis within Area of Interest. (Optional)
- \* CE Certified.

**Specification**

Model		WGD-20
CCD Module	Image Area Size	1 / 2 " CCD
	Max. Resolution	1.360×1.024
	Pixel Size	4,65×4,65 um
	Lens Mount	C mount
	Power	Supplied USB
	Optical Size	7,6×6,2 mm
	Connect to PC	USB 2,0
Manual Zoom Lens	Iris	F1.0 - Close
	Focal Length	8~48mm
	Operation Temp.	- 10 °C to + 50 °C
Overall	Dimension (w×d×h) (mm)	260×260×430
	Weight	9 kg
	Software Capability	Windows XP, Vista & 7
Packing Dimension (w×d×h) (mm)		400×350×510
Others		CE Certified
Gross Weight		18 kg
Power Supply*		USB Only

\* Other Specifications are available upon Customer's Request.



WiseCapture II™ : Real-Time Image Viewing, Capture, Manipulate and Save Images

※ Computer System Requirements

- Intel Chipset, USB 2,0 Support Mainboard
- Over Pentium 4 Processor
- Over 256 MB Main Memory
- Over 60 MB Space of HDD for Installation and Running
- Windows XP and Vista OS

<Continued on Next page>

<Continued from... "witeg" **WiseDoc® WGD-20** Portable Gel Documentation System >

## TotalLab™ Software

### TotalLab™ Quant

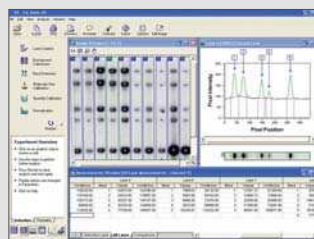
- Automatic and Manual Lane Detection
- Background Subtraction
- Fully Automatic Band Detection
- Molecular Size / pI Calibration
- Quantity Calibration
- Normalization

### Phoretix 1D (additional function)

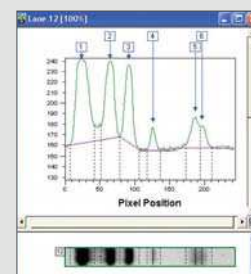
- Band Matching, Band Picking, Dendrograms
- Intensity Calibration

### Phoretix 1D Pro (additional function)

- Match Band Data Patterns across Large Groups of Lanes
- Choice of Algorithms to Generate Dendrograms: NeighborJoining, UPGMA, Complete Linkage, Single Linkage, Ward
- Library, Queries Function



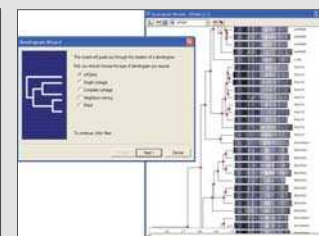
One Stop Analysis



Lane & Band



Band Matching



Band Pattern Analysis

## Ordering Information

- DH.WGD00020** Gel Doc. System, **WGD-20**, with a Camera, Portable Darkroom Hood and WiseCapture II™
- DH.WGD00024** Gel Doc. System, **WGD-20S**, with a Camera, Portable Darkroom Hood, **TotalLab™ Quant**, DNA Analysis S/W and WiseCapture II™

### *Spare & Optional Accessories*

- DH.WUV00020** Transilluminator, **WUV-L20**, 20 × 20 cm Filter, 312 nm, 15 W × 6 ea
- DH.WUV00050** , **WUV-L50**, 20 × 20 cm Filter, 365 nm + 312 nm, 15 W × 6 ea
- DH.WUV00120** , **WUV-M20**, 20 × 20 cm Filter, 312 nm, 8 W × 6 ea
- DH.WGD00100** **TotalLab™ Quant**, DNA Analysis S/W
- DH.WGD00120** **Phoretix 1D**, DNA Analysis S/W
- DH.WGD00121** **Phoretix 1D Pro**, DNA Analysis S/W
- DH.WGD00200** Laptop Computer for WGD Gel Doc. System, WGD-Laptop

**“witeg” WiseDoc<sup>®</sup> WGD-30 Unified Gel Documentation System, 1,5M Pixel**  
 Complete System, Real-Time Image through USB Interface, WiseCapture II<sup>™</sup> Capture Software,  
 Unified Darkroom System in-Built Sliding Transilluminator with Digital CCD Camera & Optical Lens, TotalLab<sup>™</sup> DNA Analysis Software



**Unified Gel Documentation System (WGD-30)**

- Complete System with Digital CCD Camera, Safety Darkroom Hood and in-built Transilluminator is Offered
- High-Quality Optical Lens with Zoom, Focus and Iris Control is Used
- CE Certified

**Application & Features**

- \* Complete System with a Digital CCD Camera, Safety Darkroom Hood and in-built Transilluminator is Offered.
- \* Unified Darkroom System with in-built Sliding Transilluminator offers very High Safety in use.
- \* Transilluminator: 312 nm, 8 W x 6 UV lamps. (WUV-M20)
- \* External Dimension : 395 x 393 x 676,5 mm
- \* Internal Dimension : 350 x 275 x 400 mm
- \* Door Size : 343 x 257
- \* Weight : 19 kg
- \* White Light : 2 x Fluorescent lamp.
- \* Power Consumption : 60 W
- \* Digital CCD Camera. (Resolution 1.5 Million pixel)
- \* 1.360 x 1.024, 10-bit CCD, Available for 8-bit Gray Level Image Capturing.
- \* High-Quality Optical Lens with Zoom, Focus and Iris Control (Manual Adjust) is used.
- \* USB 2.0 Interface is available, through which Real-time Images are Transferred Directly to PC.
- \* WiseCapture II<sup>™</sup> Software : Easy and Fast Capture of Gel Image. (Included)
- \* TotalLab<sup>™</sup> Software : Fully Automatic, Single Button Press Complete Image Analysis within Area of Interest.
- \* CE Certified.



WiseCapture II<sup>™</sup> : Real-Time Image Viewing, Capture, Manipulate and Save Images

- ※ Computer System Requirements
- Intel Chipset, USB 2.0 Support Mainboard
  - Over Pentium 4 Processor
  - Over 256MB Main Memory
  - Over 60MB Space of HDD for Installation and Running
  - Windows XP and Vista OS

**Specification**

Model		WGD-30
<b>CCD Module</b>	Image Area Size	1 / 2 " CCD
	Max. Resolution	1.360 x 1.024
	Pixel Size	4,65 x 4,65 um
	Lens Mount	C mount
	Power	Supplied USB
	Optical Size	7,6 x 6,2 mm
<b>Connect to PC</b>		USB 2,0
<b>Manual Zoom Lens</b>	Iris	F1,0 - Close
	Focal Length	8-48 mm
	Operation Temp.	-10 °C to +50 °C
<b>Transilluminator</b>	Filter Size	200 x 200 mm
	Wave Length	Single 312 um
	UV Lamps	8 W x 6 ea
<b>Overall</b>	DaylightFluorescent Lamps	7 W x 2 ea
	Dimension (w x d x h) (mm)	395 x 393 x 676,5
	Weighth	19 kg
	Power	AC 110V, 60 Hz or 220 V, 50 / 60 Hz
	Power Consumption	65 W
<b>Software Capability</b>		Windows XP, Vista & 7
<b>Others</b>		CE Certified
<b>Packing Dimension (w x d x h) (mm)</b>		440 x 440 x 750
<b>Gross Weight</b>		23 kg

\* Other Specifications are available upon Customer's Request.

<Continued on Next page>

<Continued from... "witeg" WiseDoc® WGD-30 Unified Gel Documentation System >

## WGD-20 / 30 Lens System

### **Iris Control**

Excellent Bright Zoom Lens (F 1,0 - Close)

### **Zoom Control**

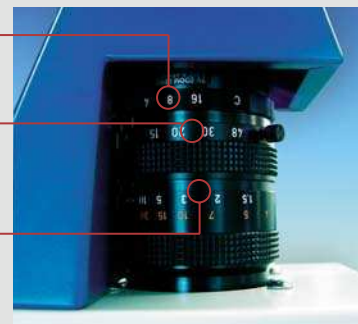
Wide Range & Easy to Control  
Focal Length Available on about 8 - 16mm

### **Focus Control**

High Precision Large Caliber Zoom Lens

### **USB Interface**

A standard High-Throughput PC Interface Enables High-Speed Transfer of Real-Time Images from CCD Camera.  
(NOTE) Only the USB version 2,0 is Supported.



WGD-20/-30 Lens

## Ordering Information

- DH.WGD00030** Gel Doc. System, **WGD-30**, with a Camera (1,5M Pixel), Darkroom Hood, in-built **WUV-M20** Transilluminator and WiseCapture II™
- DH.WGD00034** Gel Doc. System, **WGD-30S**, with a Camera (1,5M Pixel), Darkroom Hood, in-built **WUV-M20** Transilluminator, WiseCapture II™ and **TotalLab™ Quant** DNA Analysis S/W

### *Spare & Optional Accessories*

- DH.WGD00100** **TotalLab™ Quant**, DNA Analysis S/W
- DH.WGD00120** **Phoretix 1D**, DNA Analysis S/W
- DH.WGD00121** **Phoretix 1D Pro**, DNA Analysis S/W
- DH.WGD00200** LapTop Computer, for WGD Gel Doc.System
- DH.WUV01110** UV Lamp, **UVM365** for **WUV-M10**, 365 nm, 8 W
- DH.WUV02110** , **UVM312** for **WUV-M20**, 312 nm, 8 W